

B - D COMPANY



1361 S. Broadway
Denver, Co. 80210
303.744.1405
800.748.2244
www.b-dco.com



Your One Stop Shop For Specialty Automotive Products

Self Adhesive Molding

Factory and Universal Styles
-Sold by the Foot or as a Kit-

Vinyl Extruded Self Adhesive 3M
Automotive Tape



MANUFACTURER & DISTRIBUTOR OF FINE AUTOMOTIVE PRODUCTS

Table of Contents

Body Side Molding Instructions	3
Black Body Side Molding	4 - 7
Chrome Body Side Molding	8 - 9
Gold Body Side Molding	10
Black & Chrome Body Side Molding	11 - 13
Ribbed Body Side Molding	14 - 15
Color Kit Body Side Molding	16 - 18
Wheel Well Molding	19
U-Shape Door Edge	20 - 21
L-Shape Door Edge	22
Body Side Molding Tools	23

**TO ACHIEVE BEST RESULTS
THE FOLLOWING PROCEDURES MUST BE FOLLOWED**

READ CAREFULLY BEFORE STARTING

CLEAN SURFACE - The area where the molding is to be applied should be free of wax, dirt, or foreign substances. Use PRO-CLEAN for best results.

SURFACE TEMPERATURE - The surface where molding is to be installed should be at least 75 Degrees F for proper adhesion. If needed, the surface can be warmed with any type of heat gun.

ADHESION PROMOTER - Just prior to installation, a light coat of PROBOND Adhesion Promoter should be applied to the surface area where moldings will adhere, to provide permanent bonding aggression.

WARM MOLDINGS - Lightly use a heat gun or a heat box to warm moldings if they are cold and inflexible. Storage in a warm area will prevent molding from becoming stiff. CAUTION: Too much localized heat will wrinkle chrome surfaces.

INSTALLATION - To start, cut your molding for your beginning point to the proper angle using pruning shears. Peel back the poly liner from the adhesive about 18" and apply the molding along your desired line. Continue the peel and apply steps, being careful not to touch or allow the exposed adhesive to get dirty, until your installation is complete. Once the molding has been applied, use a soft clean cloth to apply pressure along the surface of the molding, to assure maximum and uniform adhesion.

NOTE: The sharp cutting edge should always be against the chrome side of the molding, with the adhesive liner side against the anvil. When the molding is cut upside down, the anvil will crush the chrome side and destroy the adhesive bonds between the chrome and the material.

NOTE: AFTER INSTALLATION IS COMPLETED, APPLY A COAT OF PRO-SEAL TO EVERY CUT THAT HAS BEEN MADE. THIS SEAL COAT MUST COVER THE SURFACE AREA OF THE CUT ALONG WITH A SLIGHT, BUT POSITIVE, OVERLAP OF THE CHROME. This will prevent degradation due to severe weathering.

All Black Self Adhesive Molding

DAW/BBR

1/4" Wide Half Round
Sold by the Foot, 20' Kit, or 90' Roll



DAW/BL

3/8" Wide Slim Line
Sold by the Foot, 60' Roll

DAW/BLHR

3/8" Wide - Half Round Wheel Well
Sold by the Foot, 20' Kit,
50' Roll or 150' Roll



DAW/W716

7/16" Wide Wheel Well
Sold by the Foot, 20' Kit, or 150' Roll

DAW/W702

With Lip Wheel Well
Sold by the Foot, 20' Kit or 100' Roll



DAW/W601

No Lip Wheel Well
Sold by the Foot, 20' Kit or 125' Roll

All Black Self Adhesive Molding

DAW/450

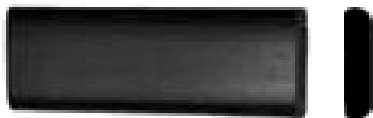
9/16" Wide - High Profile
Sold by the Foot or 60' Roll



DAW/711
5/8" Wide
Sold in 65' Roll

DAW/B650

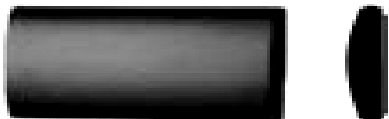
5/8" Wide - Wheel Well
Sold by the Foot or 50' Roll



DAW/DMB60
5/8" Wide
Sold by the Foot or 60' Roll

DAW/629

3/4" Wide with Finished Ends
Sold by the Foot or 100' Roll



DAW/ES126
1" Wide
Sold by the Foot, 26' Kit or 60' Roll

All Black Self Adhesive Molding

DAW/ES138 Black

1 3/8" Half Round

Sold by the Foot or 100' Roll



DAW/ES150

1 1/2" Wide

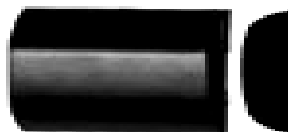
Sold by the Foot or in 65' Roll



DAW/LS170 Black

1 3/4" Wide

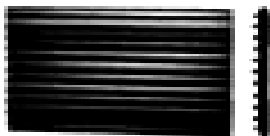
Sold by the Foot or 42' Roll



DAW/RK200

2" Wide

Sold by the Foot or in 65' Roll



DAW/ES2100 Black

2" Wide

Sold by the Foot or 65' Roll



DAW/GM10B

2 7/16" Wide

Sold by the Foot or in 34' Kit



All Black Self Adhesive Molding

TRI/C600 SERIES

9/16" Wide

Sold by the Foot or 50' Roll



TRI/CM44

1" Wide

Sold in 26' Kit

TRI/1400BT SERIES

1 3/8" Wide

Sold in 14' Kit with Finished Ends



TRI/CV96 SERIES

2" Wide

Sold in 4 piece Kit with Finished Ends

All Chrome Self Adhesive Molding

DAW/ABR90

1/4" Half Round

Sold by the Foot or 90' Roll



DAW/AB60

3/8" Wide

Sold by the Foot or 60' Roll

DAW/ABHR

3/8" Wide - Wheel Well

Sold by the Foot, 20' Kit or 50' Roll



DAW/DM60

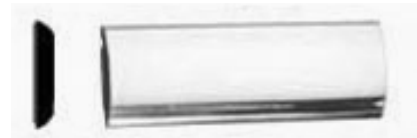
5/8" Wide

Sold by the Foot or 60' Roll

DAW/AB650

5/8" Wide - Wheel Well

Sold by the Foot or 50' Roll



DAW/AB825

3/4" Wide

Sold by the Foot or 60' Roll

All Chrome Self Adhesive Molding

DAW/AB100

1" Wide

Sold by the Foot or 60' Roll



DAW/VT125

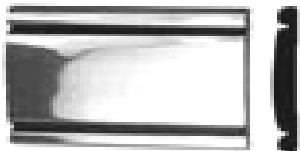
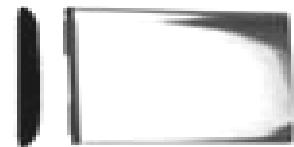
1 1/4" Wide

Sold by the Foot or 65' Roll

DAW/AB1750 Chrome

1 3/4" Wide

Sold by the Foot or 65' Roll



DAW/VT200

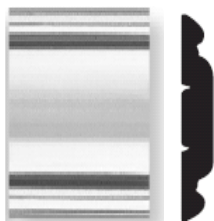
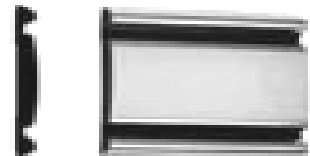
2" Wide

Sold by the Foot, 34' Kit or 65' Roll

DAW/SLV220

2 1/4" Wide

Sold by the Foot, 65' Roll or 34' Kit



TRI/1301

1 1/4" Wide

Sold in 26' Kits

All Gold Self Adhesive Molding

DAW/GBR20

1/4" Wide - Half Round
Sold in 20' Kits



DAW/GB60

3/8" Wide
Sold by the Foot or 60' Roll

DAW/DM60

5/8" Wide
Sold by the Foot or 60' Roll



DAW/W801G Gold / Black

No lip wheel well
Sold in 20' Kits

DAW/W902G Gold / Black

With lip wheel well
Sold by the Foot, or 100' Roll



DAW/DG50

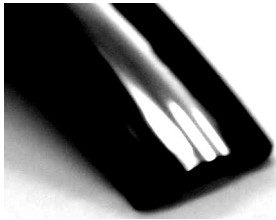
Standard Door Edge
Sold by the Foot or 50' Roll

Black & Chrome Self Adhesive Molding

DAW/VT125

1 1/4" Wide

Sold by the Foot or 65' Roll



FT150

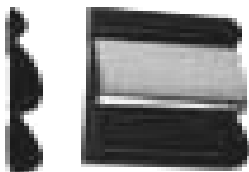
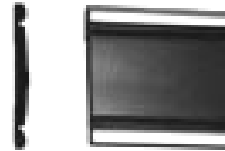
1 5/8" Wide

Sold by the Foot or 52' Roll

DAW/VT20002

2" Wide

Sold by the Foot, 34' Kit or 65' Roll



DAW/FT92

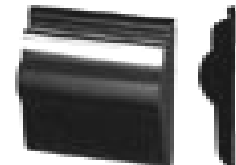
2" Wide

Sold by the Foot or 66' Roll

DAW/DRC190

2" Wide

Sold by the Foot or 42' Roll



DAW/PDC200

2" Wide

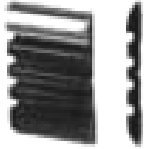
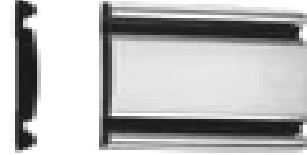
Sold by the Foot or 65' Roll

Black & Chrome Self Adhesive Molding

DAW/SLV220

2 1/4" Wide

Sold by the Foot, 65' Roll or 34' Kit



DAW/GM10C

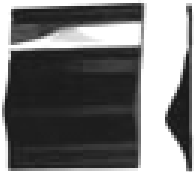
2 7/16" Wide

Sold by the Foot or in 34' Kit

DAW/S260

2 1/2" Wide

Sold by the Foot, 19' Kit or in 58' Roll



DAW/FT97

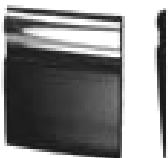
2 1/2" Wide

Sold by the Foot or 66' Roll

DAW/FT300

3" Wide

Sold by the Foot, 22' Kit or 44' Roll



DAW/S94

3" Wide

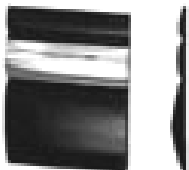
Sold by the Foot, 19' Kit or 58' Roll

Black & Chrome Self Adhesive Molding

DAW/SLV99

3 7/8" Wide

Sold by the Foot, 18' Kit or 54' Roll



DAW/S98

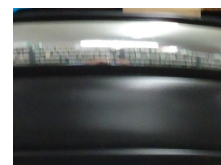
3 1/4" Wide

Sold by the Foot, 19' Kit or 58' Roll

DAW/SLV03

4 3/16" Wide

Sold by the Foot, or 65' Roll



Ribbed Self Adhesive Molding

DAW/RB50C

1 1/4" Wide

Sold by the Foot or 50' Roll



DAW/RB150

1 1/4" Wide

Sold by the Foot, 50' Roll or 150' Roll



DAW/RK200

2" Wide

Sold by the Foot, or 65' Roll



DAW/RB237

2 3/8" Wide

Sold by the Foot or 50' Roll

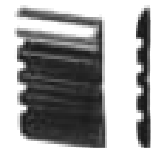


DAW/GM10C Black-Chrome /

DAW/GM10G Grey-Chrome

2 1/2" Wide

Sold by the Foot, 34' Roll or 65' Roll



DAW/GM10B

2 1/2" Wide

Sold by the Foot, 34' Roll or 65" Roll



Ribbed Self Adhesive Molding

DAW/RB337

3 3/8" Wide

Sold by the Foot or 50' Roll



DAW/TG50

4" Wide

Sold by the Foot or 50' Roll

DAW/RB450

4 1/2" Wide W/O Leg

Sold by the Foot or 50' Roll



DAW/RB550

5 1/2" Wide w/ Leg

Sold by the Foot or 50' Roll

DAW/RBGD650

6 3/8" Wide w/ Leg

Sold by the Foot or 50' Roll



Color Kits Self Adhesive Molding

DAW/W71650 High Gloss

7/16" Wide Wheel Well

Sold by the Foot, 20' Kit, or 150' Roll



-Available Colors (where black is shown)

Black	Frost White	Silver
Bright Red	Dark Maple	

DAW/724

5/8" Wide with Finished Ends

Sold in 26' Kit



-Available Colors (where black is shown)

Black	Dark Blue	Lt. Blue
Buckskin	Dark Maple	Silver
Charcoal Metallic	Gunmetal Metallic	White

DAW/629

3/4" Wide with Finished Ends

Sold by the Foot or 100' Roll



-Available Colors (where black is shown)

Black	Dark Blue	Lt. Blue
Buckskin	Dark Maple	Silver
Charcoal Metallic	Gunmetal Metallic	White

DAW/1937

7/8" Wide with Finished Ends

Sold by the Foot or in 26' Kit

Black only sold in 65' Roll



-Available Colors (where black is shown)

Black	Dark Blue	Silver
Buckskin	Dark Maple	White
Charcoal Metallic	Lt. Blue	

Color Kits Self Adhesive Molding

DAW/1211

1 1/4" Wide with Finished Ends

Sold in 26' Kit

-Available Colors (where black is shown)

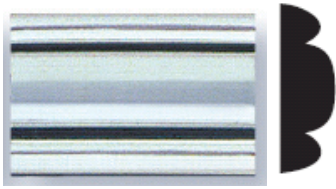
Black	Dark Briar Brown	Medium Royal Blue
Buckskin	Dark Maple	Saddle Tan Metallic
Dark Blue	Gunmetal Metallic	Silver
Dark Brown	Lt. Blue	White



DAW/711

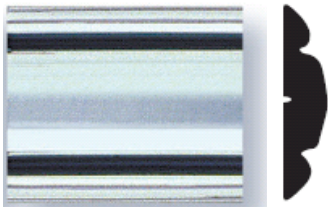
2 - 7' Pieces 5/8" Wide
with Finished Ends
Sold in 65' Roll

Color Kits Self Adhesive Molding



TRI/501
7/16" Wide
Sold in 26' Kit

TRI/500 SERIES
5/8" Wide
Sold in 26' Kit



TRI/801
7/8" Wide
Sold in 26' Kit

TRI/800 SERIES
7/8" Wide
Sold in 26' Kit

-Available Colors

Black

Bright Red



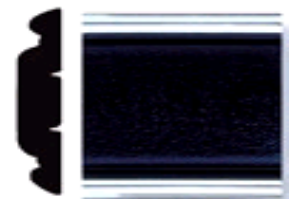
TRI/1301
1 1/4" Wide
Sold in 26' Kit

TRI/1300 SERIES
1 1/4" Wide
Sold in 26' Kit

-Available Colors

Black

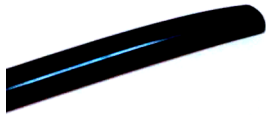
Bright Red



Wheel Well Self Adhesive Molding

DAW/W103C Black / Chrome

No lip wheel well
Sold by the Foot, 20' Kit or
50' Roll



DAW/W716

7/16' Wide
Sold by the Foot, 20' Kit, 50' Roll Or
150' Roll

DAW/W402C Chrome / Black

5/8" Wide - Wheel Well
Sold by the Foot or 50' Roll



DAW/W702B Black

With Lip Wheel Well
Sold by the Foot, 20' Kit or 100' Roll

DAW/W501C Chrome / Black

No Lip Wheel Well
Sold by the Foot, 20' Kit or 150' Roll



DAW/W601B Black

No Lip Wheel Well
Sold by the Foot, 20' Kit or 150' Roll

DAW/W902G Gold / Black

With lip wheel well
Sold by the Foot, 20' Kit or 100' Roll



Self Adhesive Door Edge Molding

DAW/DG50B - R Black

Standard flexible Door Edge
Sold by the Foot, 50' Roll or 150' Roll



DAW/DG50-HG

Standard High Gloss Colored Door Edge
Sold by the Foot or 50' Roll



DAW/DG50C-RX Chrome

Standard Door Edge
Sold by the Foot, 50' Roll or 150' Roll



DAW/DG50G

Standard Door Edge
Sold by the Foot or 50' Roll



DAW/DG50CLR Clear

Standard Door Edge
Sold by the Foot or 50' Roll



DAW/DG-B400 Black

Medium Door Edge
Sold by the Foot, 50' Roll or 150'
Roll



Self Adhesive Door Edge Molding

DAW/EG6002 Black

Wider/Heavier Door Edge
Sold by the Foot, 60' Roll or 150' Roll



TRI/21-50
Large Door Edge
Sold by the Foot, 50' Roll or 150' Roll

Colored Door Edge - Sold by the Foot - Width=9/32"



490	408	480	481
420	405	410	464
447	434	495	404

Absolute Red	TRI/490-50	Dark Red	TRI/410-50
Adobe Beige	TRI/408-50	Dark Silver	TRI/464-50
Bright Red	TRI/480-50	Emerald Green	TRI/447-50
Champaign Silver	TRI/481-50	Liquid Silver	TRI/434-50
Dark Autumn	TRI/420-50	Spectrum Blue	TRI/495-50
Dark Blue	TRI/405-50	White	TRI/404-50

Self Adhesive Door Edge L Shape Molding

DAW/DGA-B Black

L Shape Door Edge

Sold by the Foot, 20' Roll or 50' Roll



DAW/DGA-C Chrome

L Shape Door Edge

Sold by the Foot, 20' Roll or 50' Roll

DAW/DGB-AR Black

Slim Line L Shape Door Edge

Sold by the Foot, or 50' Roll



Self Adhesive Molding Tool



Tool LAPCR
Replacement blades with 10 break-offs

Tool MC10X

10" Molding cutter with 4" blade

The Multi-Cut has a mechanical action different from that of scissors. With scissors you're limited to cutting sheets of material, such as paper, fabric and thin plastic. The Multi-Cut has a mechanical action of a blade coming down onto a flat anvil. This design combined with a razor sharp blade & an offset pivot point gives you incredible cutting ability for cutting thick & rigid materials that have density



Tool MC10XP
Replacement blades & anvil

AP-CS Pro Bond Adhesive Promoter
AP16 Pro Bond Adhesive Promoter 16oz

